

“A Pathway Towards Independence and Employment”

Phoenix Autism Trust Offices
49 Bow Road, Bow, London, E3 2AD
Telephone: 020 8980 4740

Phoenix College
2 Paton Close, Bow, London, E3 2QD
Telephone: 0204 546 7710

QMUL Project SEARCH Campus
329 Mile End Road, Mile End, London, E1 4NT
Telephone: 073 6810 0118

London, 24th March 2023

Dear parents and carers,

As we enter this period of reflection, prayer and community, I wish all parents and carers that are celebrating Ramadan a great month.

Ramadan Mubarak!

Students are always very welcome to pray during the day at Phoenix College so please do communicate with our Admin Team or with your child’s class Instructor for more details on that.

We also have many reasons to celebrate this week when we look at supported employment pathways for our students. Our extraordinary and unstoppable **Employment Engagement Coordinator, Chi Yilmaz**, supported students at two new work placements this week at **Snoozebox** and at the **Tower Hamlets Food Hub**. Please read more about that in the next pages.

FREEDOM PASSES

We are rapidly approaching the end of this term and unfortunately not all students have their Freedom Passes yet. **As mentioned in my letters to you since September, all students must have their Freedom Passes with them when attending Phoenix College.** Students who do not come to Phoenix College with their Freedom Passes will not be able to join class trips.

Our Admin Team will contact you if that is the case.

All our students have the right to travel for free with their Freedom Pass and that is an essential part of our curriculum.

OPEN HOUSE

MONDAY, 22nd May – 3.15pm to 7.00pm

Thank you to all parents and carers that attended our Open House and Student Led Conferences this week! What a fantastic way to close such a successful term.

Our next Open House will take place on the 22nd of May. Please save the date!

“A Pathway Towards Independence and Employment”

A WORD FROM WORK PATH



Work Path provides support to residents within Tower Hamlets Borough with job opportunities, training, and apprenticeship opportunities. We can find suitable candidates to a good standard for roles at your company. We screen, assess and shortlist candidates to your requirements. We can minimise several applications by selecting the most suitable CV's.

As we are the local authority, our aim is to provide borough residents with employment opportunities and training, therefore our employer services are completely free of charge.

We also provide access to our premises for employers to use for interviews or hosting recruitment campaigns, should you wish to take advantage to our service.

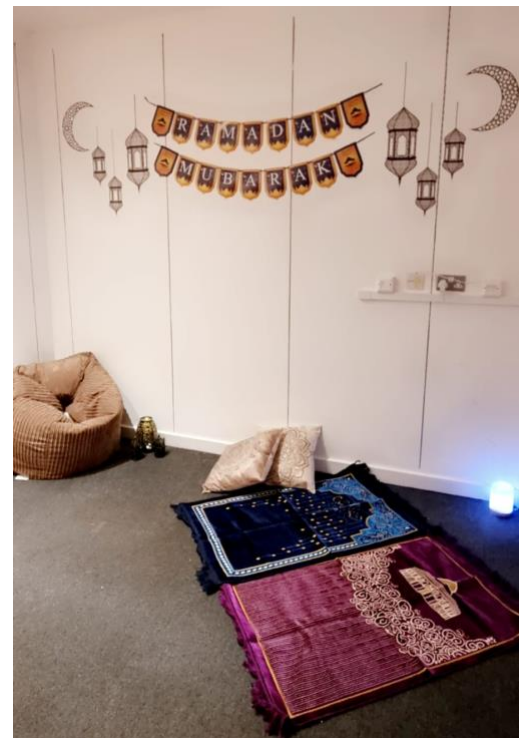
Renato will attach a leaflet of our LSE programme to this email. The programme aims to help residents gain employment, develop skills, be more independent and prepare for the future. The Officer working with the resident will go through a Vocational Profile to build a picture of what the resident can do and work towards their desired career. Additionally, the Officer will help prepare and take the resident to job interviews, liaise with employers to gain the right job role and help access any benefits relating to work.

Onna Rahman
Construction Desk & Engagement Officer
Growth & Economic Development

MULTI-FAITH ROOM

Seny Begum, our **Office Manager**, and **Tanjina Hussain**, our **Receptionist**, have worked really hard to prepare our multi-faith room for Ramadan. They insist that it is not done yet and they will keep working on that next week but don't you think that it looks great already?

As mentioned above, any student can have access to the multi-faith room for a moment of reflection, calm or if they would like to pray.



“A Pathway Towards Independence and Employment”

THIS WEEK



Kelly only started college in September and here she is crowning her first year by securing a work placement at **Snoozebox**, only a stone's throw away, in Pudding Mill Lane. Snoozebox is known for its affordable and functional container pod rooms that are both relaxing and convenient for local and international guests who come to watch ABBA - situated right across from the location - from all over the world. Kelly will be supported by one of her Job Coaches throughout her placement. We look forward to seeing her progress. Well done, Kelly!

Chi Yilmaz, Employment Engagement Coordinator

“A Pathway Towards Independence and Employment”

A very special week for all students – there were two events in one week: Open House and Student Led Conferences. Parents and carers had the opportunity to discuss the progress of the students at college and relay any concerns or suggestions they may have. An excellent meeting took place between Maryam Amjad’s parents and Phoenix College staff members. Maryam showed her parents the different classes and programmes she has been engaged in college and her parents showed heightened interest and engagement with staff and Maryam. Maryam was fantastic in her ability to go through each one of the courses that she attends with visuals and other materials from her folder as well as some of the resources and equipment that she uses at college to carry out these tasks in a timely manner.



Elena, Anila, Muhammed and Halima

Our class has been visiting relaxing and enjoyable green spaces in London during *Travel & Tourism*. This week, they visited the Roof Garden at Fenchurch Street. The group really enjoyed the views and were able to identify the Shard, Walkie Talkie and Gherkin buildings. Hamza showed really good focus on the journey this week. He was following the journey instructions carefully and looking at the station signs on the platforms to keep track of where he was and how many stops left till they reached their destination. Great work, Hamza!

Darren Serrano-Griffiths , Fitness Instructor



“A Pathway Towards Independence and Employment”

One of Tahmid's targets for this term was to lead an activity for the whole class independently. For this week's *Fitness* session students went for a long walk to Poplar. Tahmid decided to take the lead and navigated the whole group by himself. As he was familiar with the area, he showed shortcuts and hidden places to his friends. He demonstrated how to walk through busy streets, cross the road safely and stay focused when identifying different landmarks. Well done, Tahmid! Your leadership skills will be very useful in your future work placement as well!

Frank Kasa, eLearning Instructor



This week has been a good week for Mo's class. We started off the week with a nice, brisk walk to Poplar park with *Fitness* Instructor, **Darren**. Student enjoyed their journey as they got to walk through Crisp Street Market. On Thursday we took a trip to 120 Fenchurch Street roof garden with our teacher **Sarah**, for *Travel & Tourism*. All students had a lovely time travelling to central London, getting in a secured lift to the top floor to look at the roof garden. All students have been really engaged and have enjoyed this week. The student who has excelled this week is **Sameera**. Sameera has made a huge improvement utilising her coreboard to communicate. At lunch time, Sameera asked for help independently, without any prompts. Keep it up ,Sameera! Well done!

Mich Lecce, TA



"A Pathway Towards Independence and Employment"



To add to our highlights of the week is another placement that Phoenix College has secured, and that is with the **Tower Hamlets Food Hub** that has been running since the start of Covid. The Food Hub is an important source of staples for those who are unable to buy sufficient food. Thanks to a team of volunteers, and now, to **Kamal** and **Tryphene**, the Hub will be delivering Food to over 60 points in London.

We are very excited to be contributing to such a life enhancing project. Alex, who has been leading the charity, has been a huge supporter of **Project SEARCH** and is extending her support to help our young learners find employment. Well done, Kamal and Tryphene. We look forward to seeing you both grow on your career paths! **Chi Yilmaz**

Ramadan Kareem!



Renato Marques
 College Principal
 Phoenix College
 Paton Close, London E3 2QE
 phoenixcollege.london Tel: 020 4546 7710



"A Pathway Towards Independence and Employment"